

# Deafferentation and Network Dysregulation Hypotheses in Charles Bonnet Syndrome Mechanisms

Colin Chien

*Menlo-Atherton High School, 555 Middlefield Road Atherton, CA 94027, United States*

## ABSTRACT

This systematic review evaluates the extent to which different hypotheses drive visual hallucinations in Charles Bonnet Syndrome (CBS) patients. CBS is a rare condition characterized by complex, persistent visual hallucinations (VH) in patients with normal cognitive function and vision impairment. At present, the cause of CBS remains unclear; there is evidence that deafferentation, hallucinations caused by a deprivation of visual stimuli, which propagates neural hyperactivity through cortical excitability, is considered a putative mechanism by which CBS arises. Through Google Scholar and PubMed, 18 studies were included to support evidence. This emerging research posits that the condition stems from changes in sensory and control neural networks. Studies have shown reorganization of functional connectivity among different systems, including the default mode network (DMN), salience network (SN), and visual network (VN) in CBS patients, modeling alterations in brain activity. Therefore, we propose a multi-stage process which systematically combines the two hypotheses in order to clarify the underlying mechanisms behind CBS. High-order network dysregulation causes gating failures, leading hallucinations from visual deafferentation to be conceptualized.

**Keywords:** Charles Bonnet Syndrome; visual hallucinations; deafferentation; functional connectivity; default mode network; salience network; neuroimaging

## INTRODUCTION

Charles Bonnet Syndrome (CBS) is a neurological condition in which patients with severe vision loss experience vivid, chronic visual hallucinations (VH), despite being otherwise mentally healthy (1). VH can be symptomatologically categorized as simple or complex, ranging from flashes of light and geometric shapes to real-life figures and scenes (2, 3). Unlike hallucinations from

psychiatric diseases such as Parkinson's, schizophrenia, and Alzheimer's, of whose patients undergo cerebral atrophy or physical injury in the brain, the ones present in CBS primarily occur in individuals with severe vision degeneration, not neural (4). Therefore, CBS stands as a uniquely neurobiological case of VH, not associated with psychiatric illness or cognitive impairment. CBS appears in nearly 20% of those with a history of ocular pathology, including macular degeneration, cataracts, and glaucoma, and affects 47 million people worldwide (5, 6). Even so, it goes unrecognized by more than half of clinicians who treat patients with this condition and the underlying pathophysiology of CBS is largely understudied (5).

Currently, two major models are used to explain the basic mechanisms of CBS. The bottom-up VN model

---

**Corresponding author:** Colin Chien, E-mail: colinchien1@gmail.com.

**Copyright:** © 2026 Colin Chien. This is an open access article distributed under the terms of the Creative Commons Attribution License, which permits unrestricted use, distribution, and reproduction in any medium, provided the original author and source are credited.

**Accepted** March 20, 2026

<https://doi.org/10.70251/HYJR2348.42149158>

attributes CBS to deafferentation, or the lack of sensory input to the brain. Without typical amounts of input, the cortex becomes hyperexcitable, resulting in excessive reactions to the small amounts of stimuli it receives from the optic nerve; these assumptions lead to the formation of hallucinations (7, 8). This hyperexcitability can be modeled by an imbalance between excitatory and inhibitory neurotransmitters, glutamate and  $\gamma$ -aminobutyric acid (GABA), respectively. Glutamatergic neurotransmitters increase the likelihood of neuronal firing, amplifying activity in neuronal pathways, whereas inhibitory neurotransmitters suppress signal firing to prevent overstimulation (9). When this balance shifts towards excitation, the visual cortex becomes more prone to releasing hallucinations. This phenomenon, termed “phantom vision”, is analogous to the studied “phantom limb”, in which the mind reports feelings of pain despite lacking afferent stimulation from the nervous system (10). Alternatively, the top-down high-order networks attribute the mechanism to dysfunction in wide-scale brain connectivity. The networks in particular are the salience network (SN), which prioritizes relevant information signals, and default mode network (DMN), which monitors internal signals and suppresses external sensory information (11, 12). This hypothesis claims that when high-order networks fail, hallucinations generated by lower-order networks are permitted to be passed from subconsciousness to consciousness.

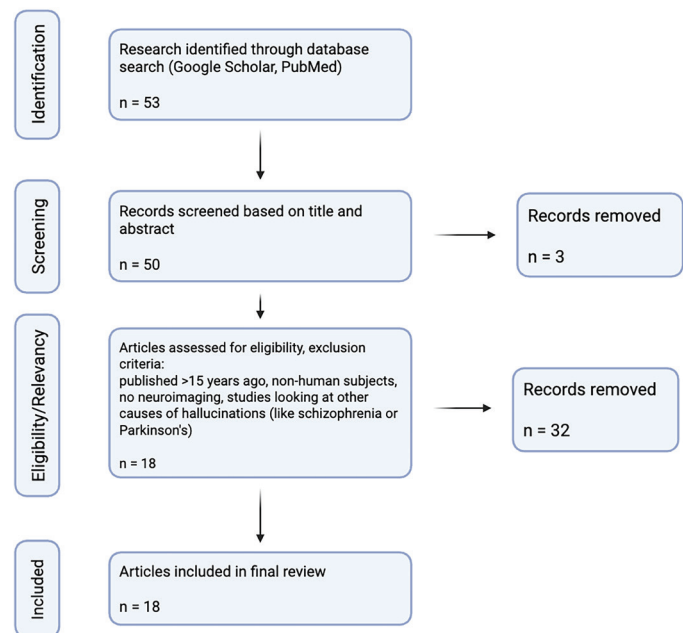
While the deafferentation model remains the most widely accepted explanation, the precise neurobiological systems that drive hallucination generation and complexity are still unclear. No existing study provides a comprehensive understanding of which mechanism serves as the primary driver for CBS hallucinations, and functional magnetic resonance imaging (fMRI) studies have yielded inconsistent results regarding whether VH arise from VN or high-order neural networks. Therefore, by synthesizing findings from multimodal neuroimaging, this review aims to clarify whether CBS hallucinations are driven primarily by hyperactivity in visual areas or by contributions from high-order brain networks.

## METHODS AND MATERIALS

We conducted a systematic search using PubMed and Google Scholar, employing several keywords and in combination in search strings, including Charles Bonnet Syndrome, VN, deafferentation, default mode network, functional connectivity, fMRI. We included all studies published in the English language and within

the last fifteen years that consisted of human subjects with Charles Bonnet syndrome diagnosis, tested a group of at least 1 CBS patient, used fMRI and/or other imaging to collect data, and examined at least 1 neural network. It is acknowledged that reliance on case studies limit generalizability and strength of inference. Our Exclusion criteria consisted of research published >15 years ago, non-human subjects, no neuroimaging, studies primarily focusing on other causes of hallucinations like schizophrenia or Parkinson’s (Figure 1).

The original database search resulted in 53 records from Google Scholar and PubMed. After records were screened based on relevancy, and if the title/abstract contained the keywords: deafferentation, default mode network, functional connectivity, fMRI, 50 records remain. Of these, 32 records were removed because they were published >15 years ago ( $n = 6$ ), did not use neuroimaging ( $n = 24$ ), or exclusively examined other causes of hallucinations ( $n = 2$ ). 18 full-length papers are



**Figure 1. PRISMA flow diagram for inclusion/exclusion of studies.** The original database search resulted in 53 records from Google Scholar and PubMed. After records were screened based on relevancy, and if the title/abstract contained the keywords: deafferentation, default mode network, functional connectivity, fMRI, 50 records remain. Of these, 32 records were removed because they were published >15 years ago ( $n = 6$ ), did not use neuroimaging ( $n = 24$ ), or exclusively examined other causes of hallucinations ( $n = 2$ ).

referenced in the table and left to be used in qualitative synthesis (Table 1). We eventually included 18 studies from which 7 studies were prospective (all 7 of which

were case controlled) and 11 studies were case studies (Table 1).

**Table 1. Summary of Included Studies in this article.** Data from 18 original studies were collected, in which at least 1 CBS patient was examined by neuroimaging. The amount *n* of CBS and control patients is specified, as well as the utilized modes of neuroimaging and examined neural networks (if any). Abbreviations: CBS = Charles Bonnet Syndrome patient, ED = Eye-related disease patient, RP = retina pigmentosa, fMRI = functional magnetic resource imaging, EEG = electroencephalography, TMS = transcranial magnetic stimulation, VPM = voxel-based morphometry, DTI = diffusion tensor imaging, MRS = magnetic resource spectroscopy, PET-CT = positron emission tomography (PET) and computed tomography (CT), VN = visual network, DMN = default mode network, SN = salience network, TBS = theta burst stimulation.

Ref	Study Type	N (CBS vs Control)	Methods	Networks Examined	Main Findings
13	Case-control Study	19 CBS, 18 ED	fMRI, EEG, TMS	VN	CBS patients have less TBS thresholds, stronger in complex hallucinators, lower activity in CBS, multimodal
2	Case-control Study	1 CBS (RP), 14 ED, 26 healthy	fMRI	DMN, SN, VN	Reorganization of brain processing in visual/salience networks, precuneus (DMN) showed higher connectivity in CBS
14	Case-control study	4 CBS, 3 ED, 15 healthy	fMRI	DMN	No difference in DMN (CBS+/CBS-), decreased connectivity in CBS- and controls vs CBS+
4	Case-control study	1 CBS, multiple healthy controls (unspecified)	fMRI	SN, DMN, VN	Changes in connectivity (both increase + decrease) among the three networks (SN, DMN, VN)
15	Case Study	1 CBS	fMRI, VBM	VN, DMN	CBS has less cortical thickness than LB, CBS patients have abnormal VN
3	Case Study	1 CBS (Leber's Hereditary Optic Neuropathy)	fMRI	VN, auditory network	Alterations occur in auditory and VN while resting, evidence of cross-modal plasticity in CBS
7	Case Study	1 CBS (ischemic stroke, right occipital lobe infarction)	fMRI	VN	Evidence of CBS coexisting with embolic event, supports dysregular neuronal network influence
16	Case-control study	16 CBS, 17 ED, 19 healthy	fMRI (DTI)	VN, DMN	Reduced cortical thickness in occipital cortex, no significant change in white matter during VH, negative correlation between hippocampus volume and hallucination severity
17	Case Study	1 CBS (RP, no psychiatric history)	EEG, MRI	electrophysiological findings; no networks	Reduced power in frontal areas, increased power in occipital/midline posterior regions
8	Case Study	1 CBS (macular degeneration, glaucoma)	fMRI (TMS)	VN	Reduced activity in lower parts of the VN, hyperactive in higher parts. Used TMS to stimulate activity in lower parts.
18	Case Study	1 CBS (hyposmia, meningioma)	fMRI	VN, DMN	Evidence of CBS coexisting with brain tumor, injury in brain

**Continued Table 1. Summary of Included Studies in this article.** Data from 18 original studies were collected, in which at least 1 CBS patient was examined by neuroimaging. The amount *n* of CBS and control patients is specified, as well as the utilized modes of neuroimaging and examined neural networks (if any). Abbreviations: CBS = Charles Bonnet Syndrome patient, ED = Eye-related disease patient, RP = retina pigmentosa, fMRI = functional magnetic resource imaging, EEG = electroencephalography, TMS = transcranial magnetic stimulation, VPM = voxel-based morphometry, DTI = diffusion tensor imaging, MRS = magnetic resource spectroscopy, PET-CT = positron emission tomography (PET) and computed tomography (CT), VN = visual network, DMN = default mode network, SN = salience network, TBS = theta burst stimulation.

Ref	Study Type	N (CBS vs Control)	Methods	Networks Examined	Main Findings
9	Case-control study	6 CBS, 6 non-CBS controls	fMRI, MRS	VN	No significant change in GABA+/glutamate concentrations in occipital regions in CBS compared to non-CBS
5	Case Study	1 CBS (bilateral cataracts, mild cognitive impairment)	fMRI	VN	No evidence of acute infarction (physical injury in the brain) in occipital lobe to support development of CBS
20	Case Study	1 CBS (metamorphopsia)	fMRI	VN	Pregabalin, or reducing the activity of excitatory neurotransmitters, was effective in subduing complex VH
21	Case Study	1 CBS (glaucoma, primary dementia)	fMRI, EEG	VN	Pregabalin, or reducing the activity of excitatory neurotransmitters, gradually got rid of all VH
22	Case Study	1 CBS (bilateral optic atrophy)	fMRI	DMN	VH is constructed under the influence of both excessive VN activity and lacking DMN activity
23	Case Study	1 CBS (glaucoma left eye)	fMRI, EEG, PET-CT	VN, DMN	Burst-activity located in thalamocortical region, reduction of hypermetabolic region after treatment
24	Case Study	1 CBS (diabetes-related blindness)	CT	did not specify	Distinguished from psychiatric disorders, no evidence of organic degeneration.

## RESULTS

### Bottom-up Mechanisms: The Deafferentation Hypothesis

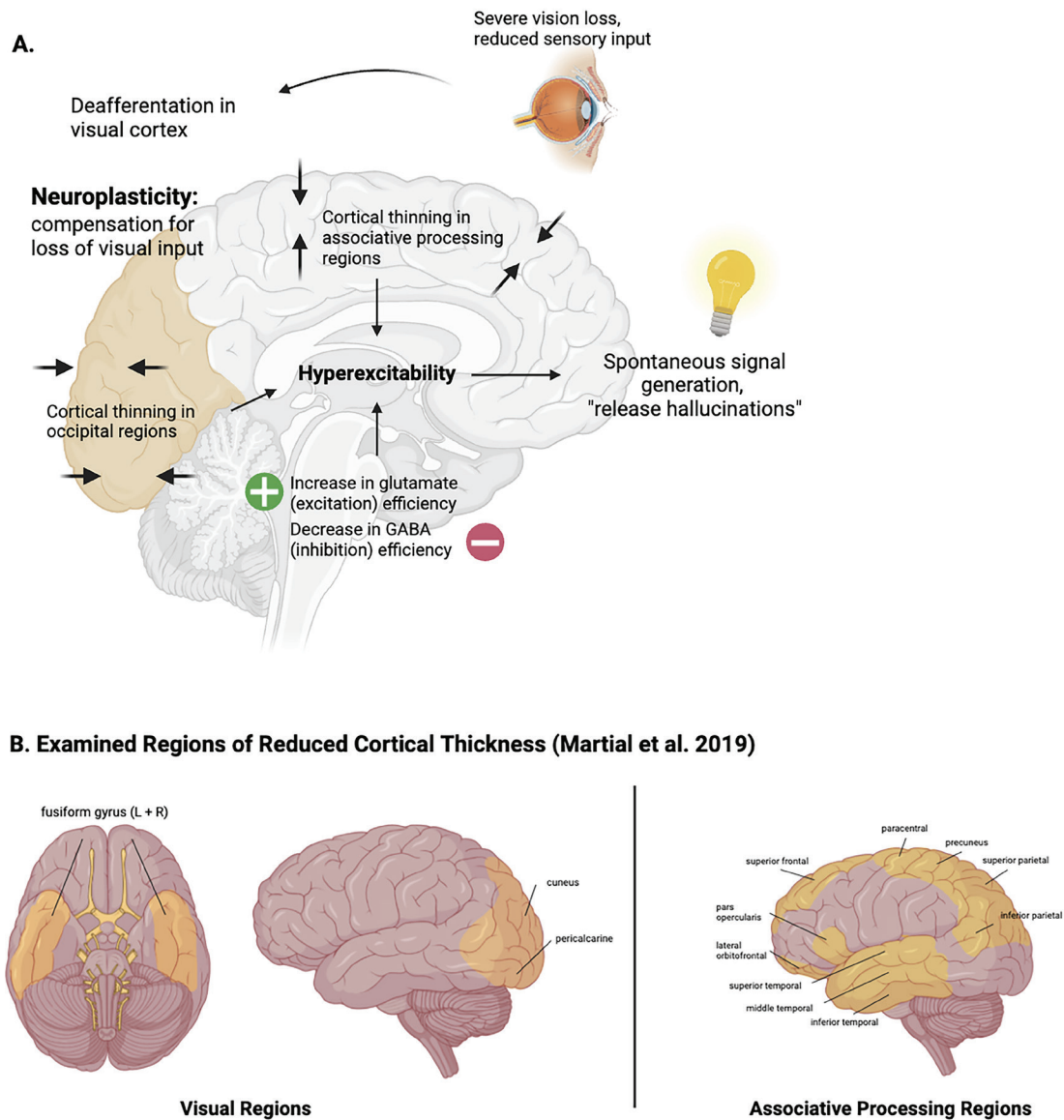
The leading hypothesis for the bottom-up argument begins with deafferentation, the lack of sensory input. In healthy patients, vision and images are formed by a balance between external visual input from the VN and stored images from the DMN. However, since individuals with CBS are known to have moderate to severe vision loss, far less visual input is processed by the VN, thus causing an imbalance (2). The VN is forced to compensate for the lack of external stimuli by firing off excessive amounts of signals, causing hyperexcitability in the visual cortex (8, 13). This leads the visual cortex to generate “release hallucinations,” which are purely based

on stored images and thus have no component of reality (25). Several studies using resting-state fMRI (rs-fMRI) showed increased visual cortex activity in CBS patients compared to visually impaired control patients, both in the presence and absence of external visual stimuli (2). Transient cortical activity, or spontaneous bursts, was also observed during VH, indicating breaches in inhibitory processes due to cortical excitation (13). A transition from tonic-firing, linear signal transmissions, to low-threshold burst-firing, nonlinear spikes in signal transmission, was also found in the thalamocortical region during a period of VH, indicating hyperexcitability between sensory and executive control regions (15, 16; Table 1). Furthermore, transcranial magnetic stimulation (TMS) observed cortical excitability when vision loss patients detected brief, phantom percepts of light

(‘phosphenes’), indicating lowered phosphene thresholds (8). In other words, it takes less light to stimulate the visual cortex, indicating hyperexcitability in the occipital region (Figure 2).

### Cortical thickness and Neuroplasticity

Structural MRI studies further support the deafferentation model by revealing variations in cortical thickness in brain regions associated with visual



**Figure 2. Bottom-Up Deafferentation Model.** (A) Severe vision loss reduces sensory input into the visual cortex, causing cortical deafferentation. In response, neuroplasticity occurs, shown through thinning in visual regions in the occipital cortex and other associative regions for signal processing. Neuroplasticity is also shown through an increase in glutamate efficiency and a decrease in GABA efficiency. Cortical thinning and this imbalance result in cortical hyperexcitability. Hyperexcitable visual areas can produce spontaneous signals, generating “release hallucinations” in CBS patients. (B) Martial et al. observed reductions in cortical thickness in visual regions: fusiform gyrus, cuneus, pericalcarine cortex. Reductions were also found in associative processing region gyri: inferior parietal, inferior temporal, lateral orbitofrontal, middle temporal, paracentral, pars opercularis, precuneus, superior frontal, superior parietal, and superior temporal.

processing. To model brain tissue concentration in CBS patients, voxel-based morphometry (VBM) observed an average reduction of  $\sim 0.98\text{mm}$  in cortical thickness in visual processing regions, such as the fusiform gyrus, cuneus, and precuneus cortex, when compared to non-hallucinating vision loss controls. (2; Figure 2b). These structural changes likely reflect compensatory neuroplasticity, adaptive reorganization in response to long-term visual deprivation. Beyond the occipital cortex, structural changes in memory related regions also correlate with hallucination severity. For example, decreased hippocampal volume, but not occipital volume, has been associated with more severe visual hallucinations in CBS (16). This places emphasis on the role of higher order associative systems, involved in memory and scene recognition, in producing severe VH experiences.

### Neurochemistry

The deafferentation model has been proposed to be supported by an imbalance between inhibitory (GABAergic) and excitatory (glutamatergic) neurochemicals in the occipital cortex of CBS patients. However, recent magnetic resonance spectroscopy (MRS) data show largely stable neurochemical levels when compared to vision loss controls, suggesting that neurochemical composition does not influence hallucination generation (4, 19). Multiple case reports found pregabalin, a drug which reduces the release of certain excitatory neurotransmitters, was effective in limiting complex VH experiences, such that VH were cleared completely within 2-15 days of pregabalin therapy (20, 21). This suggests a change in the efficiency of inhibitory signaling, rather than a measurable change in chemical levels, is more closely related to the mechanism behind CBS. Visual deprivation induces homeostatic plasticity, in which neurons increase their responsiveness to compensate for reduced input. This process, often described as synaptic scaling, leads to functional disinhibition, where inhibitory circuits operate less effectively even without a drop in GABA concentration. As a result, glutamatergic signals can propagate more easily, creating a state of heightened cortical excitability. This neurochemical instability provides a mechanistic link between sensory deprivation and the spontaneous visual activity that initiates CBS hallucinations (Figure 2).

### Top-down Mechanisms: Functional Connectivity

Conversely, the top-down hypothesis suggests that network dysconnectivity drives hallucinations in CBS

patients. rs-fMRI studies show differences in functional connectivity between high-order neural networks in CBS patients. For example, decreased connectivity between regions of the DMN, prefrontal cortex, and visual cortex suggests a failure of control and thought suppression. Increased connectivity between the temporo-occipital fusiform gyrus in the SN and regions in the VN emphasizes the misattribution of generated images (4; Figure 3a). The SN puts aberrant importance and priority on spontaneous images, thus spearheading complex hallucinations.

### EEG

Electroencephalography (EEG) studies reveal abnormalities in cortical oscillatory activity in CBS patients. Several studies report reduced alpha power (8-12 Hz) in the frontal lobe, in CBS subjects compared to visually impaired controls, critical absolute t-values being  $|t| = 3.12$ ,  $p = 0.05$  ( $n = 1$ , single comparison) (17). In healthy individuals, alpha oscillations are known to support inhibition of information processing in idle brain regions (4, 13). Reduced alpha power therefore suggests that high-order networks and the frontal lobe fail to suppress the processing networks responsible for the conceptualization of hallucinations. This allows spontaneous occipital activity generated through deafferentation to propagate forward. Additionally, a recent study, which compared resting state conditions, observed a decrease in theta-delta band activity in midline frontal regions, while paralleled by an increase in strength of the same band in posteromedial cortical regions; critical absolute t-values being  $|t| = 3.22$  for delta and  $|t| = 3.13$  for theta,  $p = 0.05$  ( $n = 1$ , single comparison) (17). This opposing pattern reflects large-scale neural network desynchronization. Slower bands, like theta-delta, coordinate communication across the entirety of the brain.

### DISCUSSION

This review evaluates whether VH in CBS arises primarily from bottom-up hyperexcitability or from top-down dysregulation. Across neuroimaging, neurochemistry and electrophysiology findings, evidence supports a combined multi-stage mechanism in which visual deafferentation generates unstable sensory signals, while large-scale network dysfunction determines whether those internally generated signals reach conscious awareness. Visual hyperexcitability in the neurons and synapses of the occipital cortex is an

attempt at compensation for the lack of visual input from deafferented cells.

Severe visual loss diminishes afferent input to the occipital cortex, triggering homeostatic plasticity, a compensatory increase in neuronal sensitivity designed to restore baseline activity in the absence of incoming sensory information. MRS studies indicate that while absolute concentrations of GABA and glutamate often remain stable, the efficiency of inhibitory GABAergic signaling decreases, leading to functional disinhibition. This excitability aligns with synaptic scaling mechanisms and explains why CBS patients exhibit lower phosphene thresholds in TMS studies (13). Even minimal stimulation can trigger visual percepts, suggesting that the visual

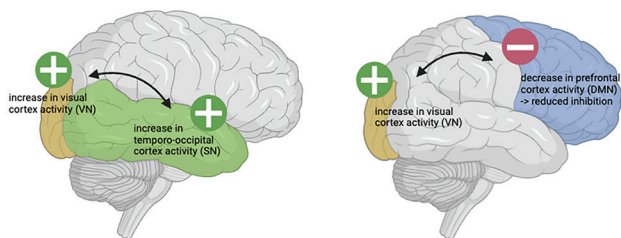
cortex enters an unstable, easily activated state. As a result, glutamatergic signals can propagate more easily, creating a state of heightened cortical excitability. This neurochemical instability provides a mechanistic link between sensory deprivation and the spontaneous visual activity that initiates CBS hallucinations (Figure 2).

Parallel evidence from fMRI data reinforce this model, demonstrating reduced grey matter and cortical thinning in visual regions, including the fusiform gyrus and cuneus. Such reorganization may heighten susceptibility to spontaneous firing of signals. This reorganization may increase the likelihood of spontaneous firing in visual areas, predisposing these regions to hallucination generation (Figure 2a). The association between reduced hippocampal volume and hallucination severity further suggests that memory and scene construction systems may influence the richness and complexity of VH, supporting a contribution from both sensory and associative networks.

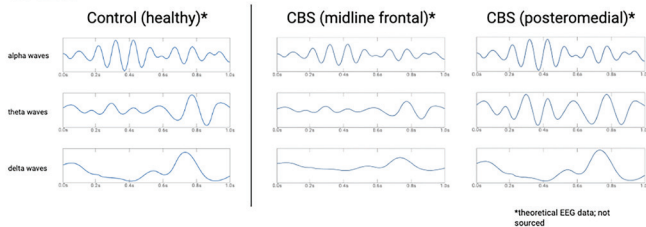
Although bottom-up hyperexcitability may generate spontaneous visual activity, it does not fully explain why some visually impaired individuals hallucinate or why hallucinations vary in complexity. Top down mechanisms address this gap. When DMN regulation is weakened, spontaneous visual activity is more likely to be misinterpreted as real. This argument posits that dysfunctions in brain connectivity in regions which are responsible for gating sensory and visual signals, particularly the DMN and SN, fail to inhibit the CBS hallucinations from reaching conscious awareness (12; Figure 3a). At the same time, increased connectivity within the SN suggests that internally generated visual signals are assigned inappropriate importance. Therefore, VH are assigned higher priority and have greater clearance. Hyperactive SN signaling may amplify spontaneous occipital activity propelling it towards awareness and contributing to the emergence of complex hallucinations. Electrophysiological data supports this interpretation. Decreased alpha amplitude suggests that higher order networks fail to gate the generated images or suppress irrelevant or noisy sensory signals from the VN from entering conscious awareness.

The lower-level network, fueled by deafferentation and vision loss by ocular pathology, generates the signals through spontaneous neuron activations. Additional findings of altered theta-delta activity between frontal and posteromedial regions indicate impaired global coordination. The reduction of theta-delta band activity could suggest the decrease in top-down control, as they control the same regions. Alternatively, an increase in

#### A. Functional Connectivity:



#### B. EEG:



**Figure 3. Top-Down Dysregulation Model.** (A) fMRI reveals a collective increase in functional connectivity between the VN and SN. This indicates the hyperexcitable visual cortex is associated with an overactive SN, which gives generated signals higher priority and overrides gating systems. fMRI also shows an increase in functional connectivity between the VN and DMN. This indicates the hyperexcitable visual cortex is associated with an underactive DMN, suggesting a gating failure for the images generated by the hyperactive visual cortex. (B) EEG data shows a decrease in alpha power in the midline frontal region, associated with the DMN, suggesting a reduction in inhibition. An decrease in theta-delta power was demonstrated in the midline frontal cortex, followed by an increase in the posteromedial cortex. This reveals wide-scale desynchronization, as well as a communication failure between the DMN (midline frontal) and VN (posteromedial).

the posteromedial region could signify the increase in internal signal generation in the visual cortex (Figure 3b). Thus, theta-delta abnormalities reflect a breakdown in long range neural coordination. Reduced frontal activity weakens top-down suppression, while increased posteromedial activity amplifies internally generated imagery. This desynchronization prevents higher order networks from properly filtering, inhibiting, and contextualizing spontaneous visual signals, allowing them to manifest as hallucinations.

Although CBS is unique in arising from visual deprivation rather than psychiatric or neurodegenerative disease, it shares mechanistic features with other well-studied hallucination phenomena. In conditions like Parkinson's disease and Lewy Body Dementia, dysfunction in high-order networks is also present, suggesting that impaired higher order regulation may represent a general mechanism of hallucination susceptibility, regardless of the initiating cause (28, 29). CBS also parallels a mechanism similar to the studied "phantom limb," as the brain uses stored percepts to elicit feelings of pain, despite no real stimuli (30). In the phantom limb, the observed amputated patient experiences vivid sensations, including pain, in the amputated limb, despite the absence of sensory signals. Both phantom limb pain and CBS sensory deprivation leads to hyperexcitability in the corresponding cortical regions, resulting in spontaneous activity that is misinterpreted as a real percept.

This mechanistic model is especially important to establish because many cases of CBS go undiagnosed by clinicians. This is largely due to both the lack of awareness about the condition, and the stigma surrounding the nature of hallucinations, making patients reluctant to confess the hallucinatory experiences in fear of being diagnosed with a psychotic or neurodegenerative disease. Its general prevalence is not to be ignored, as it was diagnosed in 20% of visually impaired patients, while 40% were recorded as not having told anyone about their VH experiences (27). This further drives its necessity to be better understood.

The emergence of visual hallucinations in CBS patients follows a multi-step process, involving both local and systemic neural networks. Stage 1: ocular pathology first leads to significant reductions in sensory input to the visual cortex. Stage 2: to compensate for this silence, the visual cortex undergoes homeostatic neuroplasticity, and its synapses become more sensitive to less traces of visual input. This results in cortical thinning and functional disinhibition, which leads to

Stage 3: spontaneous signal firing of raw visual data from the hyperexcitable visual cortex. Stage 4: top-down neural networks such as the DMN and SN, because of the functional dysregulation and network desynchronization, fail to gate this information from reaching Stage 5: conscious perception.

It is difficult for the deafferentation hypothesis to explain why only some visually impaired people experience VH, suggesting that VH is also influenced by some coexisting factor. Further pursuits should consider multi-modal data collection to capture a fuller picture of VH in CBS.

These studies, however, face potential limitations. First, existing sample sizes are extremely small, The majority of records included in this paper is limited to case studies, with only one examined patient. Few studies utilize multi-modal imaging, like fMRI and EEG combined, so thus yield less precise data. Difficulties in standardization also appear, particularly in the severity of VH across CBS patients. Hallucination content varies significantly across individuals, whether simple or complex, and the concept of "vision loss" itself is not uniform due to the varying ocular pathologies that occur in CBS individuals.

## **CONCLUSION**

This systematic review suggests that CBS arises from the interplay between bottom-up sensory deprivation and top-down network dysfunction. While the hyperexcitable regions, the visual cortex, provide the fuel for the hallucinations, the gate that allows this information to pass through into consciousness is controlled by high-order neural networks.

The clinical perspective of this combined model is also crucial to consider. Understanding that CBS is a multi-stage process of both sensory and cognitive dysfunction helps destigmatize the condition as a whole. By doing so, it is clearly distinguished from other psychiatric disorders.

## **CONFLICT OF INTEREST**

The author declares no conflicts of interest related to this work.

## **ACKNOWLEDGEMENTS**

I sincerely thank Tamara J. for her mentorship and enthusiasm in discussing this topic with me, as well as

the Polygence Institute for giving me this opportunity. I would like to thank Jessica A. for her help in publishing my paper. I would also like to thank Michelle Smith for her feedback on the paper.

## REFERENCES

1. Russell G, Burns A. Charles Bonnet syndrome and cognitive impairment: a systematic review. *Int Psychogeriatr.* 2014; 26 (9): 1431-43. <https://doi.org/10.1017/S1041610214000763>
2. Martial C, Larroque SK, Cavaliere C, Wannez S, Annen J, Kupers R, *et al.* Resting-state functional connectivity and cortical thickness characterization of a patient with Charles Bonnet syndrome. *PLOS ONE.* 2019; 14 (7): e0219656. <https://doi.org/10.1371/journal.pone.0219656>
3. Vacchiano V, Tonon C, Mitolo M, Evangelisti S, Carbonelli M, Liguori R, *et al.* Functional MRI study in a case of Charles Bonnet syndrome related to LHON. *BMC Neurol.* 2019; 19 (1): 350. <https://doi.org/10.1186/s12883-019-1579-9>
4. Kinakool AN, Moro SS, Cohan R, Rafique SA, Steeves JKE. Alterations in resting-state functional connectivity in Charles Bonnet Syndrome. *J Vis.* 2024; 24 (10): 396. <https://doi.org/10.1167/jov.24.10.396>
5. Kelson M, Santos T, Athanasios A, Fitzsimmons A. Out of sight, am I losing my mind? A case report on Visual Release Hallucinations - Charles Bonnet Syndrome. *Psychiatry Res Case Rep.* 2022; 1 (2): 100036. <https://doi.org/10.1016/j.psycr.2022.100036>
6. Christoph SEG, Boden KT, Siegel R, Seitz B, Szurman P, Schulz A. The prevalence of Charles-Bonnet syndrome in ophthalmic patients: A systematic review and meta-analysis. *Brain Res Bull.* 2025; 223: 111282. <https://doi.org/10.1016/j.brainresbull.2025.111282>
7. Kumral E, Uluakay A, Dönmez I. Charles Bonnet Syndrome in a Patient With Right Medial Occipital Lobe Infarction: Epileptic or Deafferentation Phenomenon? *The Neurologist.* 2015; 20 (1): 13. <https://doi.org/10.1097/NRL.0000000000000037>
8. Spitzberg AJ, Marler S, Joanlanne A, Gallego J, Malhotra AK, Argyelan M. Excitatory versus inhibitory TMS in Charles Bonnet Syndrome: A case report. *Transcranial Magn Stimul.* 2025; 3: 100168. <https://doi.org/10.1016/j.transm.2025.100168>
9. Andersen JV, Schousboe A. Milestone Review: Metabolic dynamics of glutamate and GABA mediated neurotransmission - The essential roles of astrocytes. *J Neurochem.* 2023; 166 (2): 109-37. <https://doi.org/10.1111/jnc.15811>
10. Strong J. Full article: "Playthings of the Brain": Phantom Visions in Charles Bonnet Syndrome. Available from: [https://www.tandfonline.com/doi/full/10.1080/01634372.2019.1631927?casa\\_token=IET2AqFUnjoAAAAA%3AkilBQKOdaJlQqwkIT\\_mIIMp24JOFp6KeKavPi3Sd9vmmYgd8z83wjygbCsb79j8Jz-nHJZy5C-bSBE](https://www.tandfonline.com/doi/full/10.1080/01634372.2019.1631927?casa_token=IET2AqFUnjoAAAAA%3AkilBQKOdaJlQqwkIT_mIIMp24JOFp6KeKavPi3Sd9vmmYgd8z83wjygbCsb79j8Jz-nHJZy5C-bSBE) (Accessed on 2025-10-2)
11. Mohan A, Roberto AJ, Mohan A, Lorenzo A, Jones K, Carney MJ, *et al.* The Significance of the Default Mode Network (DMN) in Neurological and Neuropsychiatric Disorders: A Review. *Yale J Biol Med.* 2016; 89 (1): 49-57.
12. Schimmelpfennig J, Topczewski J, Zajkowski W, Jankowiak-Siuda K. The role of the salience network in cognitive and affective deficits. *Front Hum Neurosci.* 2023; 17. <https://doi.org/10.3389/fnhum.2023.1133367>
13. daSilva Morgan K, Collerton D, Firbank MJ, Schumacher J, ffytche DH, Taylor JP. Visual cortical activity in Charles Bonnet syndrome: testing the deafferentation hypothesis. *J Neurol.* 2025; 272 (3): 199. <https://doi.org/10.1007/s00415-024-12741-2>
14. Hanoglu T, Velioglu HA, Salar BA, Yildiz S, Bayraktaroglu Z, Yulug B, *et al.* Resting State Neural Networks at Complex Visual Hallucinations in Charles Bonnet Syndrome [Internet]. bioRxiv; 2022. p. 2022.07.15.500190. Available from: <https://www.biorxiv.org/content/10.1101/2022.07.15.500190v1>, doi:10.1101/2022.07.15.500190 (Accessed on 2025-10-8). <https://doi.org/10.1101/2022.07.15.500190>
15. Osório E, Bastos-Leite AJ, Brandão I. P-795 - Resting-state functional magnetic resonance imaging (fMRI) in Charles Bonnet Syndrome. *Eur Psychiatry.* 2012; Abstracts of the 20th European Congress of Psychiatry. 27:1. [https://doi.org/10.1016/S0924-9338\(12\)74962-3](https://doi.org/10.1016/S0924-9338(12)74962-3)
16. Firbank MJ, daSilva Morgan K, Collerton D, Elder GJ, Parikh J, Olsen K, *et al.* Investigation of structural brain changes in Charles Bonnet Syndrome. *NeuroImage Clin.* 2022; 35: 103041. <https://doi.org/10.1016/j.nicl.2022.103041>
17. Piarulli A, Annen J, Kupers R, Laureys S, Martial C. High-Density EEG in a Charles Bonnet Syndrome Patient during and without Visual Hallucinations: A Case-Report Study. *Cells.* 2021; 10 (8): 1991. <https://doi.org/10.3390/cells10081991>
18. Diana LL, Carmona-Huerta J, Patiño JG, Alejandro AL, Sol DA. Atypical Charles Bonnet syndrome secondary to frontal meningioma: a case report. *BMC Psychiatry.* 2021; 21 (1): 365. <https://doi.org/10.1186/s12888-021-03360-6>
19. Bridge H, Wyllie A, Kay A, Rand B, Starling L, Millington-Truby RS, *et al.* Neurochemistry and functional connectivity in the brain of people with

- Charles Bonnet syndrome. *Ther Adv Ophthalmol*. 2024; 16: 25158414241280201. <https://doi.org/10.1177/25158414241280201>
20. Sawant NS, Bokdawala RA. Pregabalin in the treatment of Charles Bonnet syndrome. *J Pak Med Assoc*. 2013; 63 (4): 530-1.
  21. Cinar N, Sahin S, Karsidag S. Eye-related visual hallucinations: Consider 'Charles Bonnet syndrome.' *Indian J Ophthalmol*. 2011; 59 (3): 229. <https://doi.org/10.4103/0301-4738.81038>
  22. Kosman KA, Silbersweig DA. Pseudo-Charles Bonnet Syndrome With a Frontal Tumor: Visual Hallucinations, the Brain, and the Two-Hit Hypothesis. *J Neuropsychiatry Clin Neurosci*. 2018; 30: 84-6. <https://doi.org/10.1176/appi.neuropsych.17040076>
  23. Jang JW, Youn YC, Seok JW, Ha SY, Shin HW, Ahn SW, *et al*. Hypermetabolism in the left thalamus and right inferior temporal area on positron emission tomography-statistical parametric mapping (PET-SPM) in a patient with Charles Bonnet syndrome resolving after treatment with valproic acid. *J Clin Neurosci*. 2011; 18 (8): 1130-2. <https://doi.org/10.1016/j.jocn.2010.12.038>
  24. Teruel AR, Luengo AV, Lovaco BF. Complex Visual Hallucinations in Charles Bonnet Syndrome: Diagnostic and Treatment Challenges in a Case with Psychotic Features. *Eur Psychiatry*. 2025; 68 (S1): S864-5. <https://doi.org/10.1192/j.eurpsy.2025.1752>
  25. Hamedani A. The Charles Bonnet Syndrome: a Systematic Review of Diagnostic Criteria. *Curr Treat Options Neurol*. 2019 [cited 2026 Jan 24]. Available from: <https://link.springer.com/article/10.1007/s11940-019-0582-1>. <https://doi.org/10.1007/s11940-019-0594-x>
  26. Iavarone E, Yi J, Shi Y, Zandt BJ, O'Reilly C, Geit WV, *et al*. Experimentally-constrained biophysical models of tonic and burst firing modes in thalamocortical neurons. *PLOS Comput Biol*. 2019; 15 (5): e1006753. <https://doi.org/10.1371/journal.pcbi.1006753>
  27. Eriksen NS, Mousavi N, Subhi Y, Sørensen TL, Krogh Nielsen M. Charles Bonnet syndrome in patients with geographic atrophy secondary to age-related macular degeneration: a cross-sectional study. *Ther Adv Ophthalmol*. 2025; 17: 25158414241305500. <https://doi.org/10.1177/25158414241305500>
  28. Mehraram R, Peraza LR, Murphy NRE, Cromarty RA, Graziadio S, O'Brien JT, *et al*. Functional and structural brain network correlates of visual hallucinations in Lewy body dementia. *Brain*. 2022; 145 (6): 2190-205. <https://doi.org/10.1093/brain/awac094>
  29. Yao N. The Default Mode Network is Disrupted in Parkinson's Disease with Visual Hallucinations. 2025. doi:10.1002/hbm.22577.
  30. Jones L, Ditzel-Finn L, Enoch J, Moosajee M. An overview of psychological and social factors in Charles Bonnet syndrome. *Ther Adv Ophthalmol*. 2021; 13: 25158414211034715. <https://doi.org/10.1177/25158414211034715>